

Hampshire Water Transfer and Water Recycling Project

Environmental Statement – Figure 7.2 Non-designated heritage assets within the study area

VOLUME NUMBER: 6

PLANNING INSPECTORATE SCHEME NUMBER: WA010002

APPLICATION DOCUMENT REFERENCE: 6.3

APFP REGULATION: 5(2)(a)

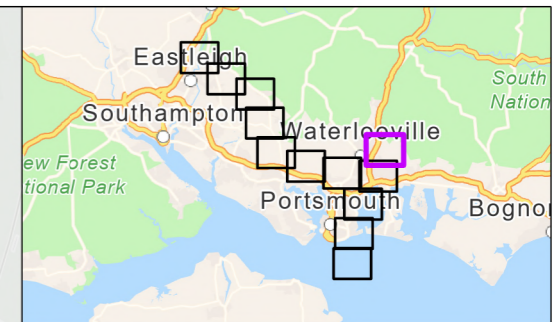
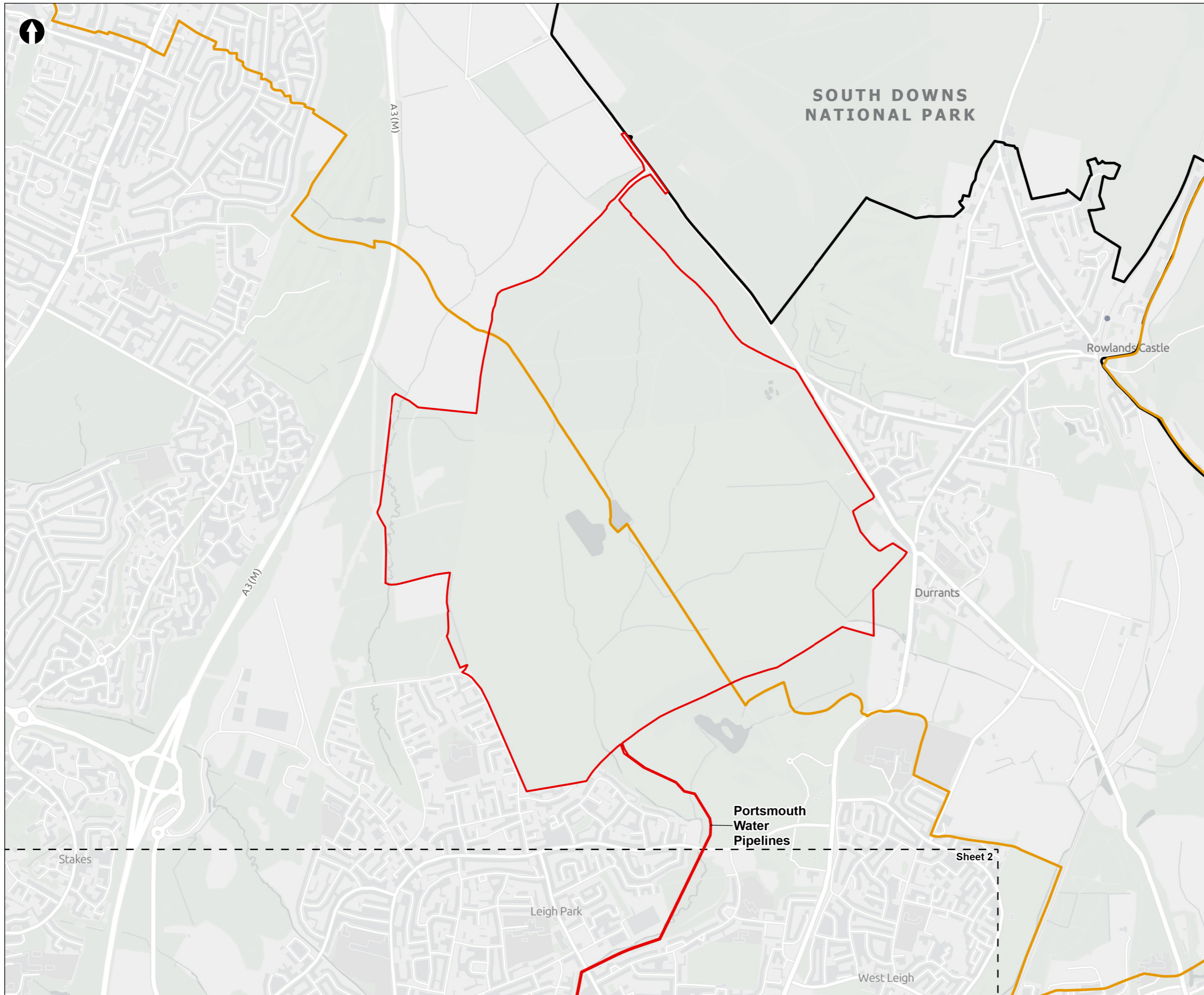
May 2026

Version 0



from
**Southern
Water** 

The Southern Water logo consists of three stylized, wavy blue lines of varying lengths, positioned to the right of the text 'Southern Water'.



- ▭ Order Limits
- Sheet Extent Boxes 1:15k
- National Parks
- Local planning authorities

Example ID Labels:
 *7031 - Historic Buildings
 *39183 - Archaeology
 *EWC5042 - Events
 *MWC5042 - Monument Find Spots

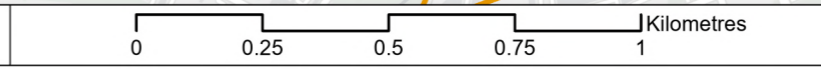
Coordinate system: British National Grid; Datum: OSGB 1936
 Data sources: © Crown copyright and database rights 2026 Ordnance Survey 0100031673. Sources: Esri, TomTom, Garmin, FAO, NOAA, USGS, © OpenStreetMap contributors, and the GIS User Community, Contains OS data © Crown Copyright and database right 2026. Contains data from OS Zoomstack

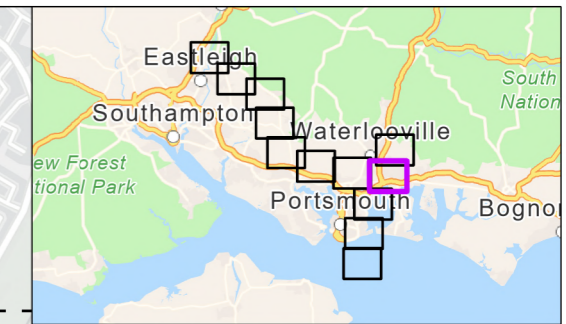
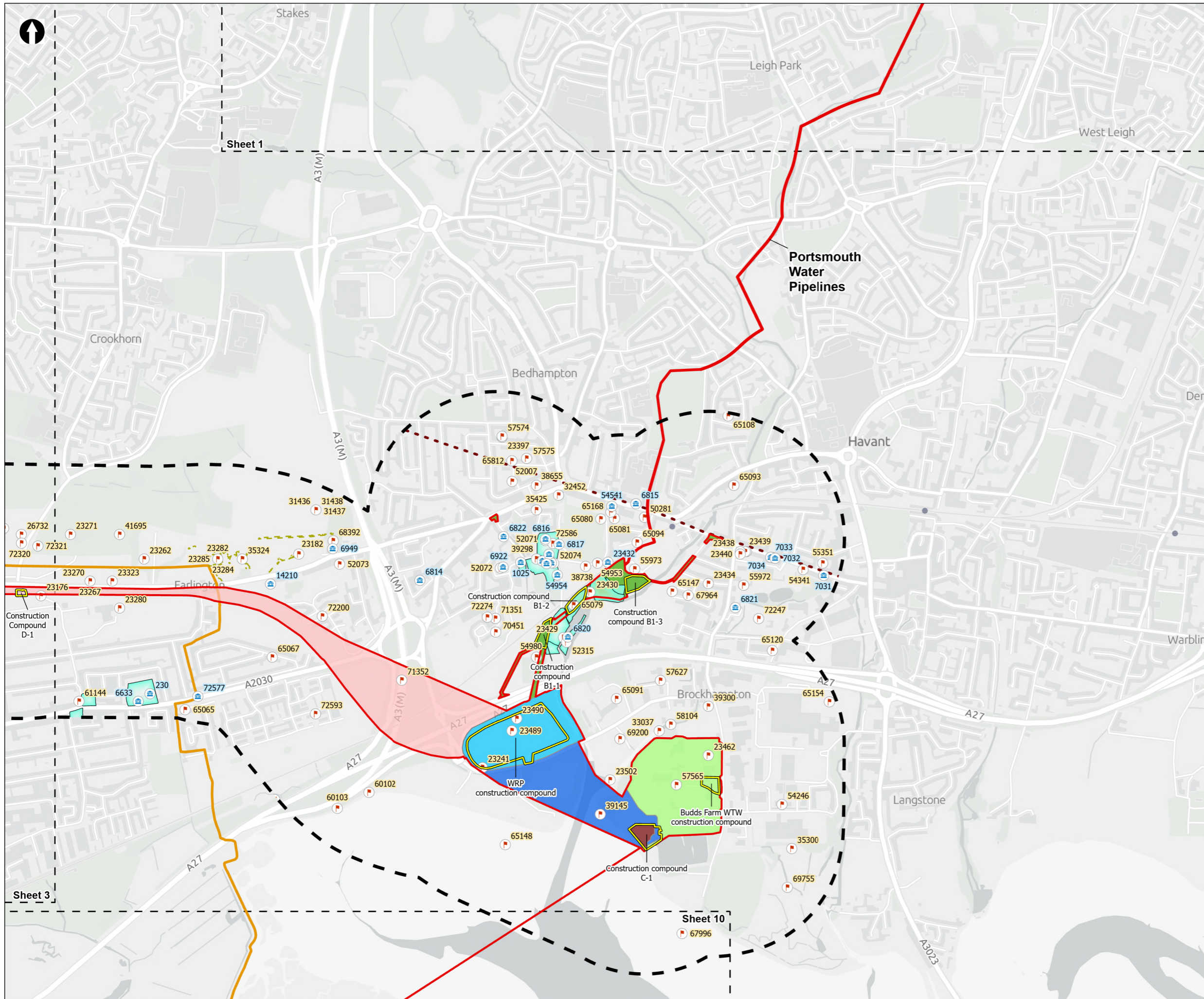
PROJECT TITLE
 Hampshire Water Transfer and Water Recycling Project



Figure 7.2
 Non-designated heritage assets within the study area
 Sheet 1 of 12

Drawn DL	GIS Checked MW	Checked MP	Approved AK
Scale at A3 1:15,000	Status Final	Revision 05	Security STD





- Order Limits
- 500m Study Area
- Sheet Extent Boxes 1:15k
- Local planning authorities
- Hampshire HER**
- Archaeology
- Historic Buildings
- Cropmarks
- Roman Roads
- Historic Rural Settlement
- Proposed Development Components**
- Budds Farm Wastewater Treatment Works
- Limits of Deviation for Budds Farm Pumping Station
- Pipelines between the Water Recycling Plant site and Bedhampton Springs
- Water Recycling Plant site
- Pipelines between Budds Farm Wastewater Treatment Works and the Water Recycling Plant site
- Pipeline between the Water Recycling Plant site and Otterbourne Water Supply Works**
- Section D: The Water Recycling Plant site to Portsdown Hill
- Construction compounds

Example ID Labels:
 *7031 - Historic Buildings
 *39183 - Archaeology
 *EWC5042 - Events
 *MWC5042 - Monument Find Spots

Coordinate system: British National Grid; Datum: OSGB 1936
 Data sources: © Crown copyright and database rights 2026 Ordnance Survey 0100031673. Sources: Esri, TomTom, Garmin, FAO, NOAA, USGS, © OpenStreetMap contributors, and the GIS User Community, Contains OS data © Crown Copyright and database right 2026. Contains data from OS Zoomstack

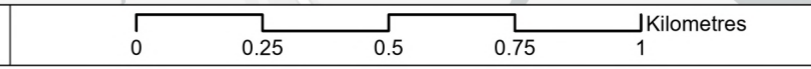
PROJECT TITLE
 Hampshire Water Transfer and Water Recycling Project



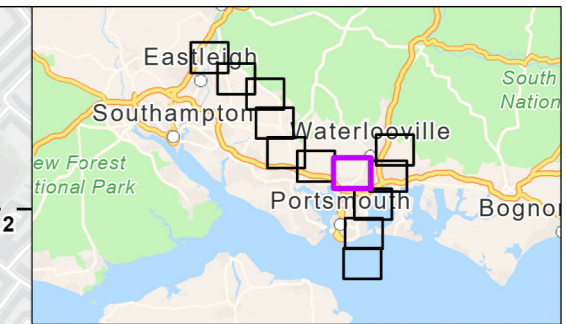
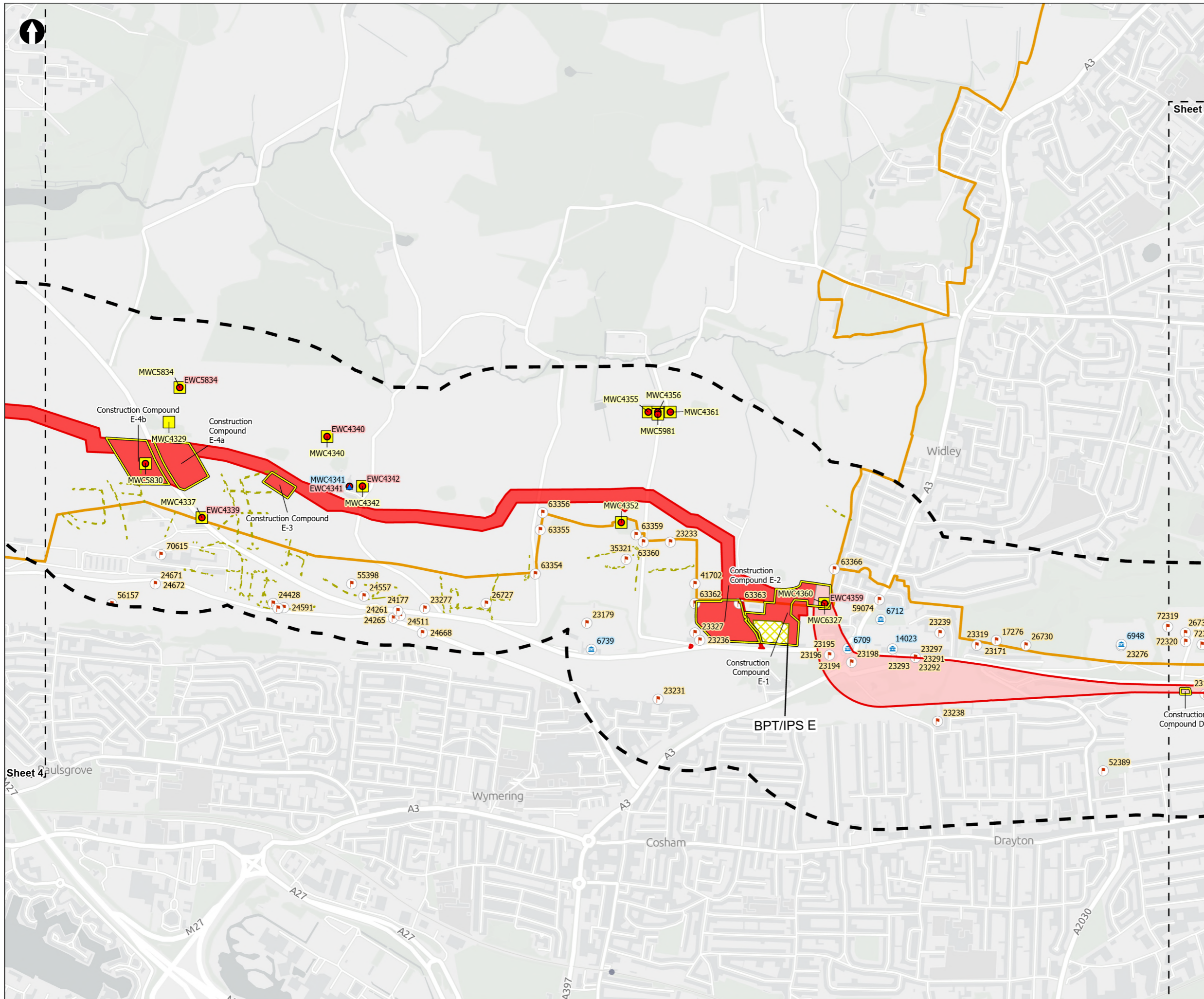
Figure 7.2
 Non-designated heritage assets within the study area
 Sheet 2 of 12

Drawn DL	GIS Checked MW	Checked MP	Approved AK
Scale at A3 1:15,000	Status Final	Revision 05	Security STD

© Southern Water 2026
 This document is issued for the party which commissioned it and for specific purposes connected with the captioned project only. It should not be relied upon by any other party or used for any other purpose. We accept no responsibility for the consequences of this document being relied upon by any other party, or being used for any other purpose, or containing any error or omission which is due to an error or omission in data supplied to us by other parties.



Drawing Number
PC5223-RHD-ES-ZZ-D-Z-0116



Order Limits

- 500m Study Area
- Sheet Extent Boxes 1:15k
- Local planning authorities

Winchester HER

- Events (point)
- Historic Buildings (point)
- Monument Find Spots (point)

Hampshire HER

- Archaeology
- Historic Buildings
- Cropmarks

Pipeline between the Water Recycling Plant site and Otterbourne Water Supply Works

- Section D: The Water Recycling Plant site to Portsdown Hill
- Section E: Portsdown Hill to Boarhunt
- Construction compounds

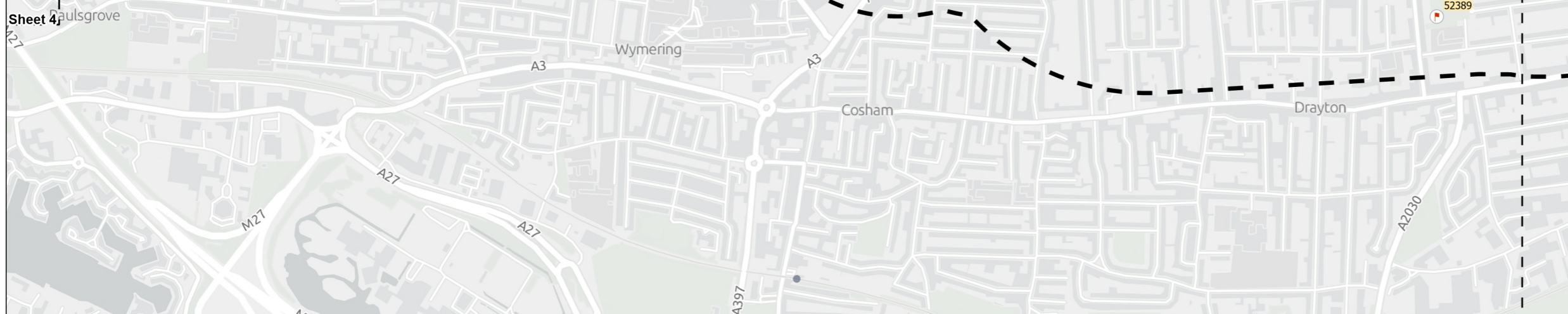
Above Ground Plant

- Break Pressure Tank & Intermediate Pumping Station

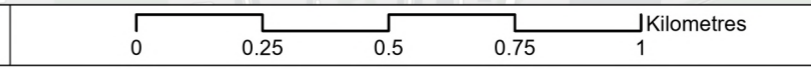
Example ID Labels:

- *7031 - Historic Buildings
- *39183 - Archaeology
- *EWC5042 - Events
- *MWC5042 - Monument Find Spots

Coordinate system: British National Grid; Datum: OSGB 1936
 Data sources: © Crown copyright and database rights 2026 Ordnance Survey 0100031673. Sources: Esri, TomTom, Garmin, FAO, NOAA, USGS, © OpenStreetMap contributors, and the GIS User Community, Contains OS data © Crown Copyright and database right 2026. Contains data from OS Zoomstack



© Southern Water 2026
 This document is issued for the party which commissioned it and for specific purposes connected with the captioned project only. It should not be relied upon by any other party or used for any other purpose.
 We accept no responsibility for the consequences of this document being relied upon by any other party, or being used for any other purpose, or containing any error or omission which is due to an error or omission in data supplied to us by other parties.

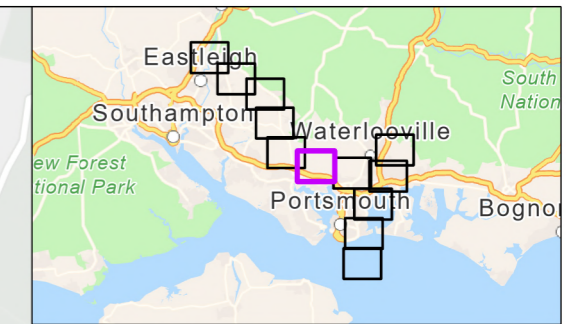
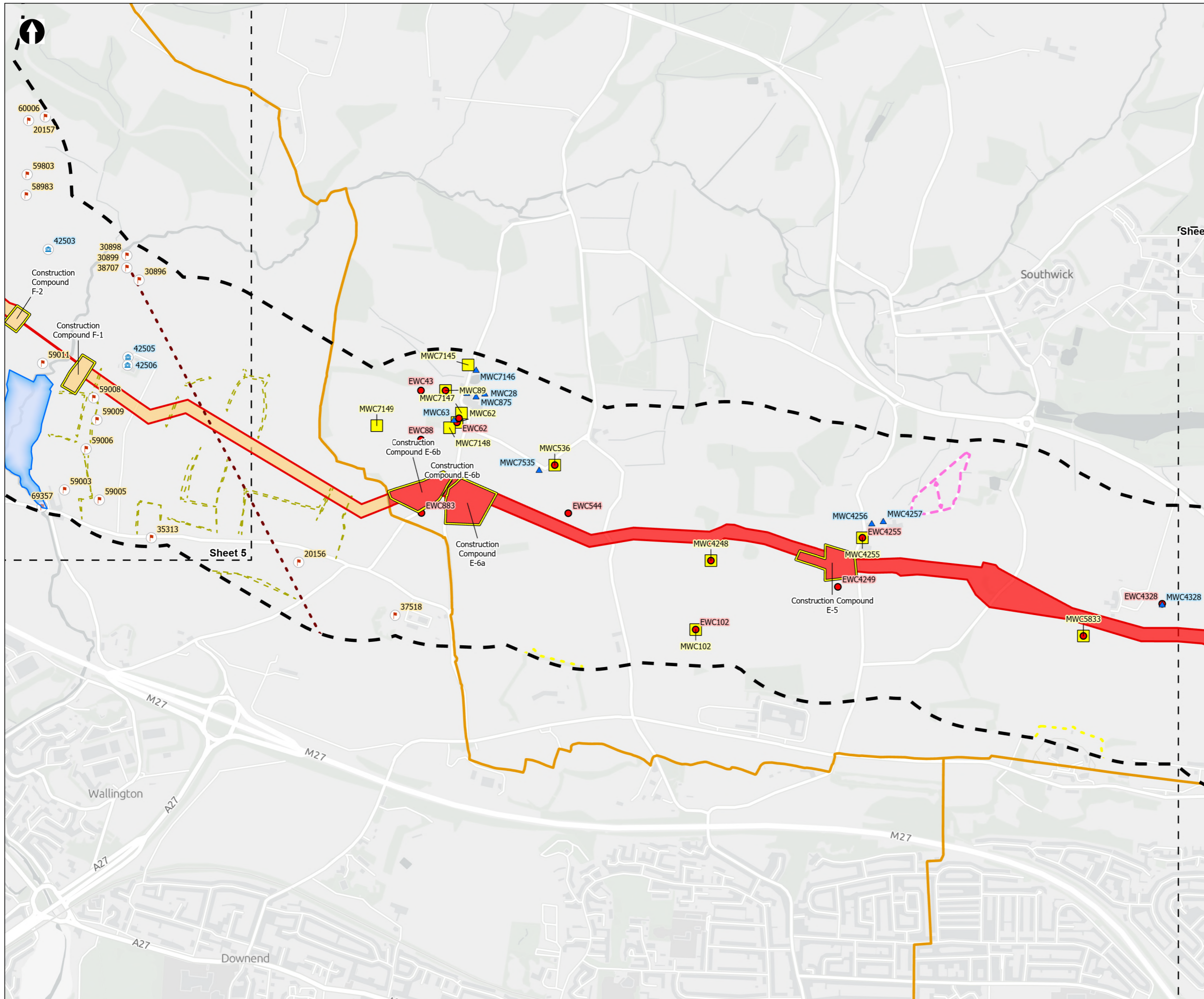


PROJECT TITLE
 Hampshire Water Transfer and Water Recycling Project

Figure 7.2
 Non-designated heritage assets within the study area
 Sheet 3 of 12

Drawn DL	GIS Checked MW	Checked MP	Approved AK
Scale at A3 1:15,000	Status Final	Revision 05	Security STD

Drawing Number
PC5223-RHD-ES-ZZ-D-Z-0116



Order Limits

- 500m Study Area
- Sheet Extent Boxes 1:15k
- Local planning authorities

Winchester HER

- Hampshire Aggregate Areas
- Historic Water Meadows
- Events (point)
- Historic Buildings (point)
- Monument Find Spots (point)
- Monument Find Spots (poly)

Hampshire HER

- Archaeology
- Historic Buildings
- Cropmarks
- Roman Roads
- Water Meadows

Pipeline between the Water Recycling Plant site and Otterbourne Water Supply Works

- Section E: Portsdown Hill to Boarhunt
- Section F: Boarhunt to Crockerhill
- Construction compounds

Example ID Labels:

- *7031 - Historic Buildings
- *39183 - Archaeology
- *EWC5042 - Events
- *MWC5042 - Monument Find Spots

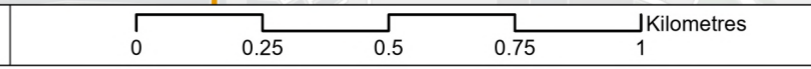
Coordinate system: British National Grid; Datum: OSGB 1936
 Data sources: © Crown copyright and database rights 2026 Ordnance Survey 0100031673. Sources: Esri, TomTom, Garmin, FAO, NOAA, USGS, © OpenStreetMap contributors, and the GIS User Community, Contains OS data © Crown Copyright and database right 2026. Contains data from OS Zoomstack

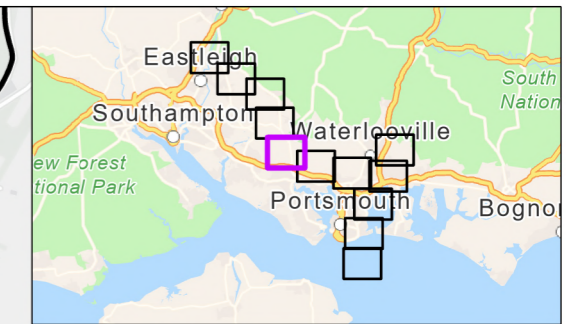
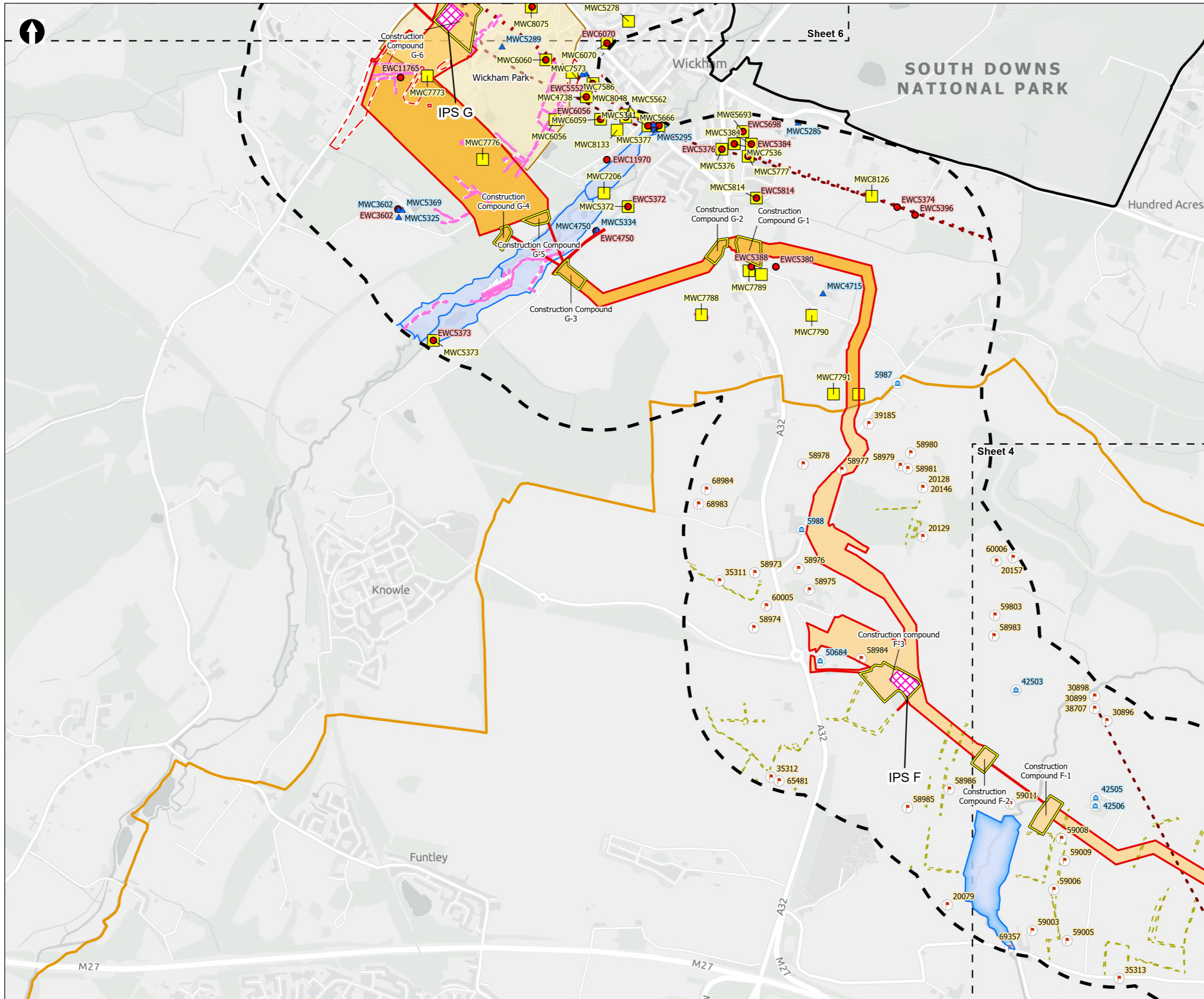
PROJECT TITLE
 Hampshire Water Transfer and Water Recycling Project



Figure 7.2
 Non-designated heritage assets within the study area
 Sheet 4 of 12

Drawn DL	GIS Checked MW	Checked MP	Approved AK
Scale at A3 1:15,000	Status Final	Revision 05	Security STD





- Order Limits
- 500m Study Area
- Sheet Extent Boxes 1:15k
- National Parks
- Local planning authorities
- Winchester HER**
- Roman Roads
- Hampshire Aggregate Areas
- Historic Water Meadows
- Historic Deerparks
- Events (point)
- ▲ Historic Buildings (point)
- Monument Find Spots (point)
- Events (poly)
- Hampshire HER**
- Archaeology
- ▲ Historic Buildings
- Cropmarks
- Roman Roads
- Water Meadows
- Pipeline between the Water Recycling Plant site and Otterbourne Water Works**
- Section F: Boarhunt to Crockerhill
- Section G: Crockerhill to Wickham
- Construction compounds
- Above Ground Plant**
- Intermediate Pumping Station

Example ID Labels:
 *7031 - Historic Buildings
 *39183 - Archaeology
 *EWC5042 - Events
 *MWC5042 - Monument Find Spots

Coordinate system: British National Grid; Datum: OSGB 1936
 Data sources: © Crown copyright and database rights 2026 Ordnance Survey 0100031673. Sources: Esri, TomTom, Garmin, FAO, NOAA, USGS, © OpenStreetMap contributors, and the GIS User Community, Contains OS data © Crown Copyright and database right 2026. Contains data from OS Zoomstack

PROJECT TITLE
 Hampshire Water Transfer and Water Recycling Project

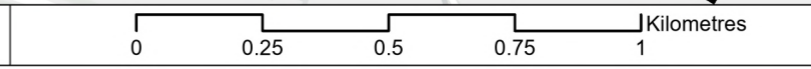


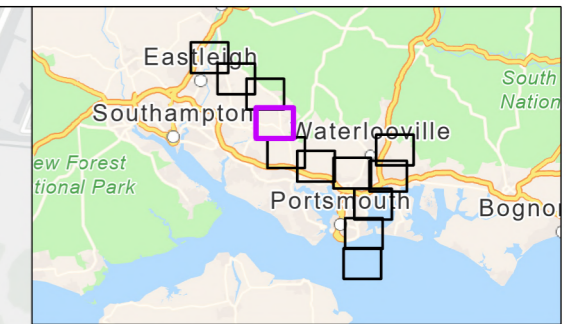
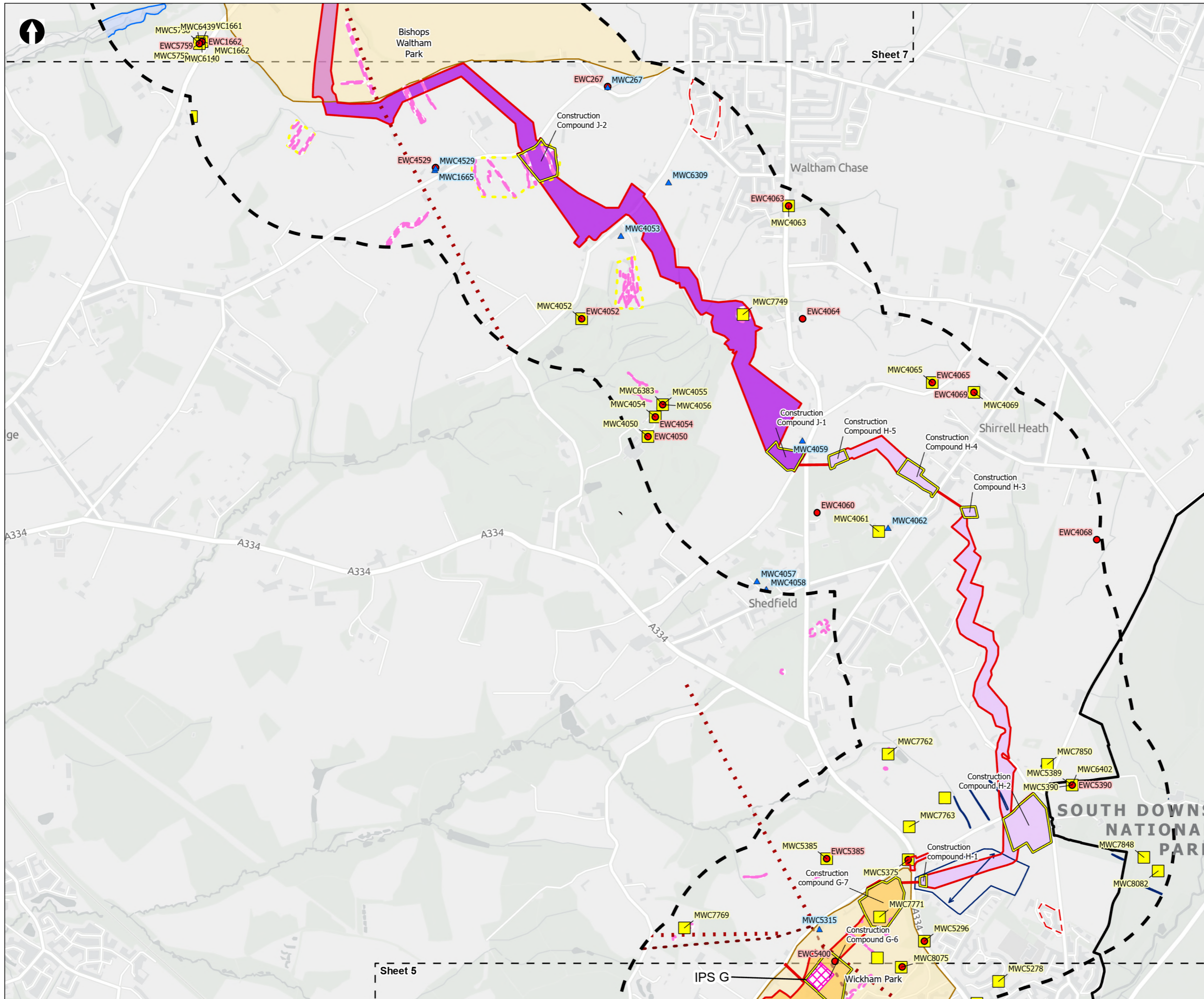
Figure 7.2
 Non-designated heritage assets within the study area
 Sheet 5 of 12

Drawn DL	GIS Checked MW	Checked MP	Approved AK
Scale at A3 1:15,000	Status Final	Revision 05	Security STD

Drawing Number
PC5223-RHD-ES-ZZ-D-Z-0116

© Southern Water 2026
 This document is issued for the party which commissioned it and for specific purposes connected with the captioned project only. It should not be relied upon by any other party or used for any other purpose. We accept no responsibility for the consequences of this document being relied upon by any other party, or being used for any other purpose, or containing any error or omission which is due to an error or omission in data supplied to us by other parties.





- Order Limits
- 500m Study Area
- Sheet Extent Boxes 1:15k
- National Parks
- Local planning authorities
- Winchester HER**
- SDNP National Mapping Programme Area 2 to 6
- Roman Roads
- Hampshire Aggregate Areas
- Historic Water Meadows
- Historic Deerparks
- Events (point)
- ▲ Historic Buildings (point)
- Monument Find Spots (point)
- Monument Find Spots (poly)
- Events (poly)
- Hampshire HER**
- Roman Roads
- Pipeline between the Water Recycling Plant site and Otterbourne Water Supply Works**
- Section G: Crockerhill to Wickham
- Section H: Wickham to Shedfield
- Section J: Shedfield to the River Hamble
- Construction compounds
- Above Ground Plant**
- Intermediate Pumping Station

Example ID Labels:
 *7031 - Historic Buildings
 *39183 - Archaeology
 *EWC5042 - Events
 *MWC5042 - Monument Find Spots

Coordinate system: British National Grid; Datum: OSGB 1936
 Data sources: © Crown copyright and database rights 2026 Ordnance Survey 0100031673. Sources: Esri, TomTom, Garmin, FAO, NOAA, USGS, © OpenStreetMap contributors, and the GIS User Community, Contains OS data © Crown Copyright and database right 2026. Contains data from OS Zoomstack

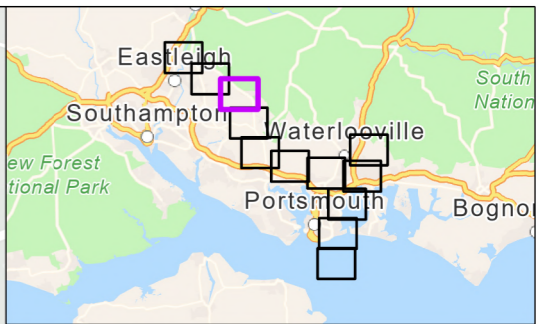
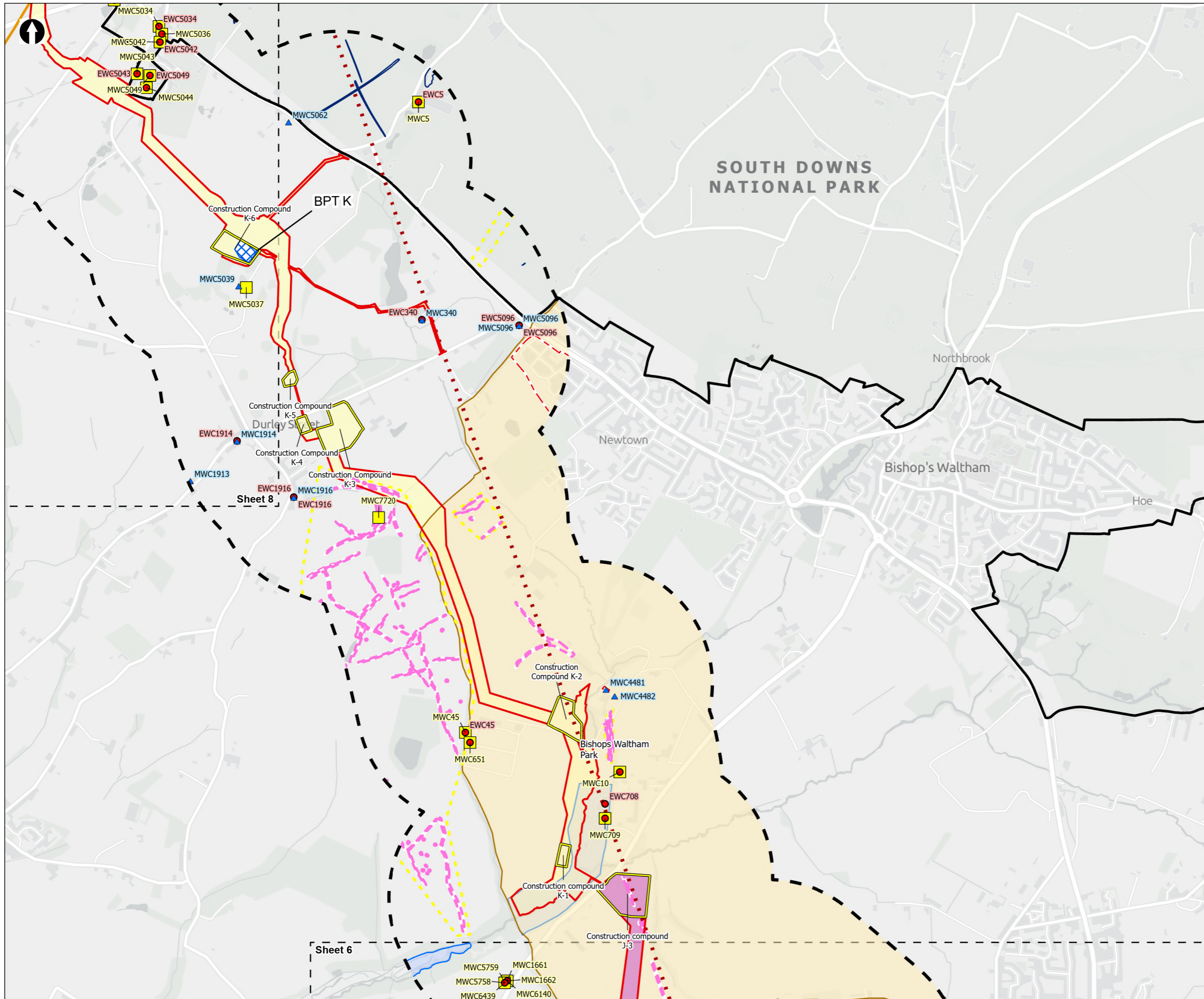
PROJECT TITLE
 Hampshire Water Transfer and Water Recycling Project



Figure 7.2
 Non-designated heritage assets within the study area
 Sheet 6 of 12

Drawn DL	GIS Checked MW	Checked MP	Approved AK
Scale at A3 1:15,000	Status Final	Revision 05	Security STD

Drawing Number
 PC5223-RHD-ES-ZZ-D-Z-0116



- Order Limits
- 500m Study Area
- Sheet Extent Boxes 1:15k
- National Parks
- Local planning authorities
- Winchester HER**
- SDNP National Mapping Programme Area 2 to 6
- Roman Roads
- Hampshire Aggregate Areas
- Historic Water Meadows
- Historic Deerparks
- Events (point)
- ▲ Historic Buildings (point)
- Monument Find Spots (point)
- Monument Find Spots (poly)
- Events (poly)
- Pipeline between the Water Recycling Plant site and Otterbourne Water Supply Works**
- Section J: Shedfield to the River Hamble
- Section K: The River Hamble to Lower Upham
- Construction compounds
- Above Ground Plant**
- X Break Pressure Tank

Example ID Labels:
 *7031 - Historic Buildings
 *39183 - Archaeology
 *EWC5042 - Events
 *MWC5042 - Monument Find Spots

Coordinate system: British National Grid; Datum: OSGB 1936
 Data sources: © Crown copyright and database rights 2026 Ordnance Survey 0100031673. Sources: Esri, TomTom, Garmin, FAO, NOAA, USGS, © OpenStreetMap contributors, and the GIS User Community, Contains OS data © Crown Copyright and database right 2026. Contains data from OS Zoomstack

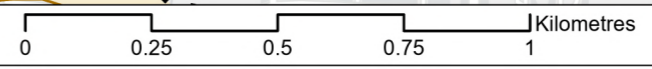
PROJECT TITLE
 Hampshire Water Transfer and Water Recycling Project

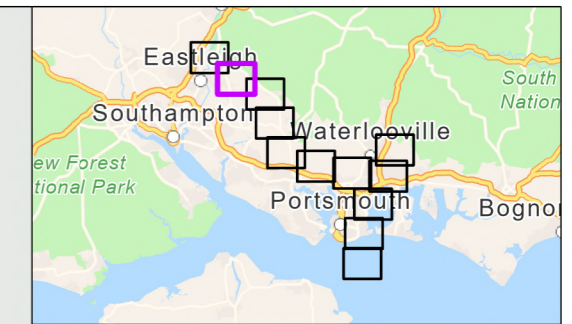
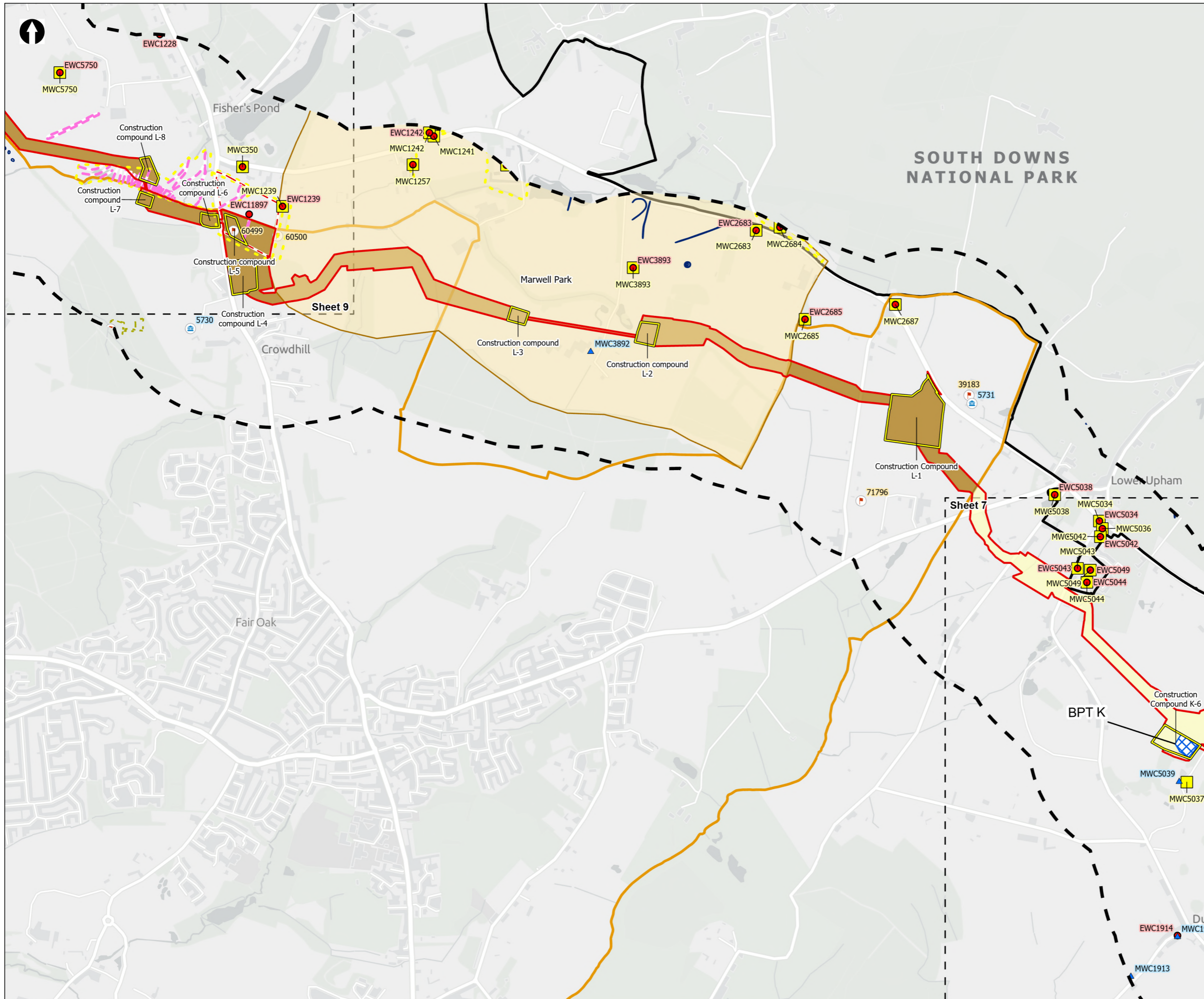


Figure 7.2
 Non-designated heritage assets within the study area
 Sheet 7 of 12

Drawn DL	GIS Checked MW	Checked MP	Approved AK
Scale at A3 1:15,000	Status Final	Revision 05	Security STD

Drawing Number
 PC5223-RHD-ES-ZZ-D-Z-0116





- Order Limits
- 500m Study Area
- National Parks
- Local planning authorities
- Winchester HER**
- SDNP National Mapping Programme Area 2 to 6
- Hampshire Aggregate Areas
- Historic Deerparks
- Events (point)
- ▲ Historic Buildings (point)
- Monument Find Spots (point)
- Monument Find Spots (poly)
- Events (poly)
- Hampshire HER**
- Archaeology
- ▲ Historic Buildings
- Cropmarks
- Pipeline between the Water Recycling Plant site and Otterbourne Water Supply Works**
- Section K: The River Hamble to Lower Upham
- Section L: Lower Upham to Brambridge
- Construction compounds
- Above Ground Plant**
- Break Pressure Tank

Example ID Labels:
 *7031 - Historic Buildings
 *39183 - Archaeology
 *EWC5042 - Events
 *MWC5042 - Monument Find Spots

Coordinate system: British National Grid; Datum: OSGB 1936
 Data sources: © Crown copyright and database rights 2026 Ordnance Survey 0100031673. Sources: Esri, TomTom, Garmin, FAO, NOAA, USGS, © OpenStreetMap contributors, and the GIS User Community, Contains OS data © Crown Copyright and database right 2026. Contains data from OS Zoomstack

PROJECT TITLE
 Hampshire Water Transfer and Water Recycling Project

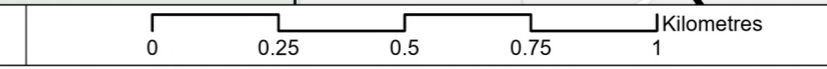


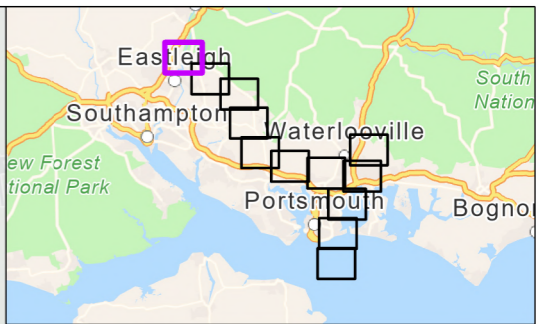
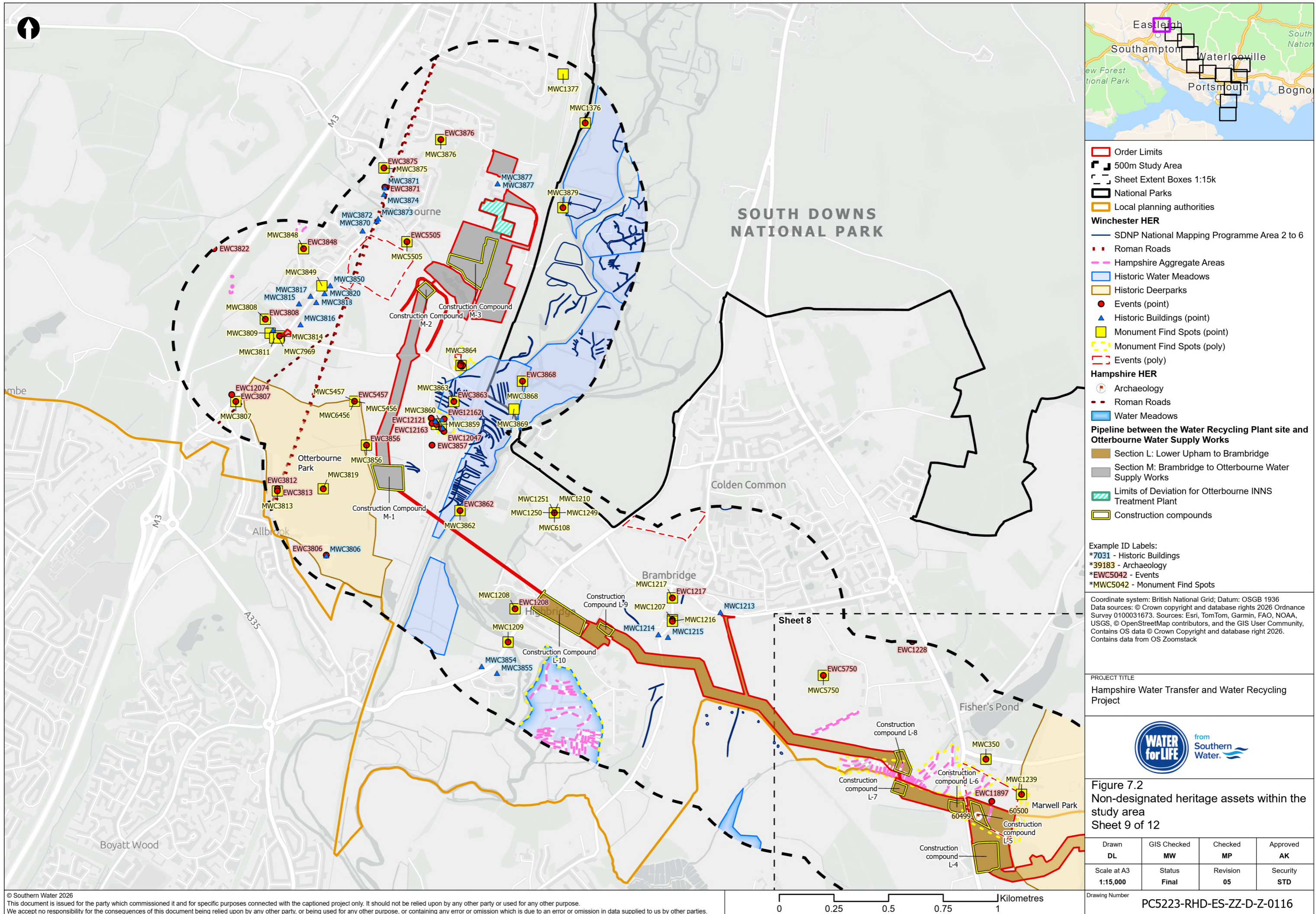
Figure 7.2
 Non-designated heritage assets within the study area
 Sheet 8 of 12

Drawn DL	GIS Checked MW	Checked MP	Approved AK
Scale at A3 1:15,000	Status Final	Revision 05	Security STD

Drawing Number
PC5223-RHD-ES-ZZ-D-Z-0116

© Southern Water 2026
 This document is issued for the party which commissioned it and for specific purposes connected with the captioned project only. It should not be relied upon by any other party or used for any other purpose. We accept no responsibility for the consequences of this document being relied upon by any other party, or being used for any other purpose, or containing any error or omission which is due to an error or omission in data supplied to us by other parties.





- Order Limits
 - 500m Study Area
 - Sheet Extent Boxes 1:15k
 - National Parks
 - Local planning authorities
 - Winchester HER**
 - SDNP National Mapping Programme Area 2 to 6
 - Roman Roads
 - Hampshire Aggregate Areas
 - Historic Water Meadows
 - Historic Deerparks
 - Events (point)
 - ▲ Historic Buildings (point)
 - Monument Find Spots (point)
 - Monument Find Spots (poly)
 - Events (poly)
 - Hampshire HER**
 - Archaeology
 - Roman Roads
 - Water Meadows
 - Pipeline between the Water Recycling Plant site and Otterbourne Water Works**
 - Section L: Lower Upham to Brambridge
 - Section M: Brambridge to Otterbourne Water Supply Works
 - Limits of Deviation for Otterbourne INNS Treatment Plant
 - Construction compounds
- Example ID Labels:
 *7031 - Historic Buildings
 *39183 - Archaeology
 *EWC5042 - Events
 *MWC5042 - Monument Find Spots

Coordinate system: British National Grid; Datum: OSGB 1936
 Data sources: © Crown copyright and database rights 2026 Ordnance Survey 0100031673. Sources: Esri, TomTom, Garmin, FAO, NOAA, USGS, © OpenStreetMap contributors, and the GIS User Community, Contains OS data © Crown Copyright and database right 2026. Contains data from OS Zoomstack

PROJECT TITLE
 Hampshire Water Transfer and Water Recycling Project

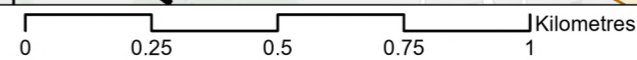


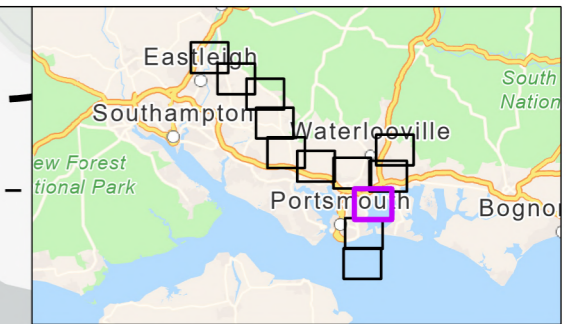
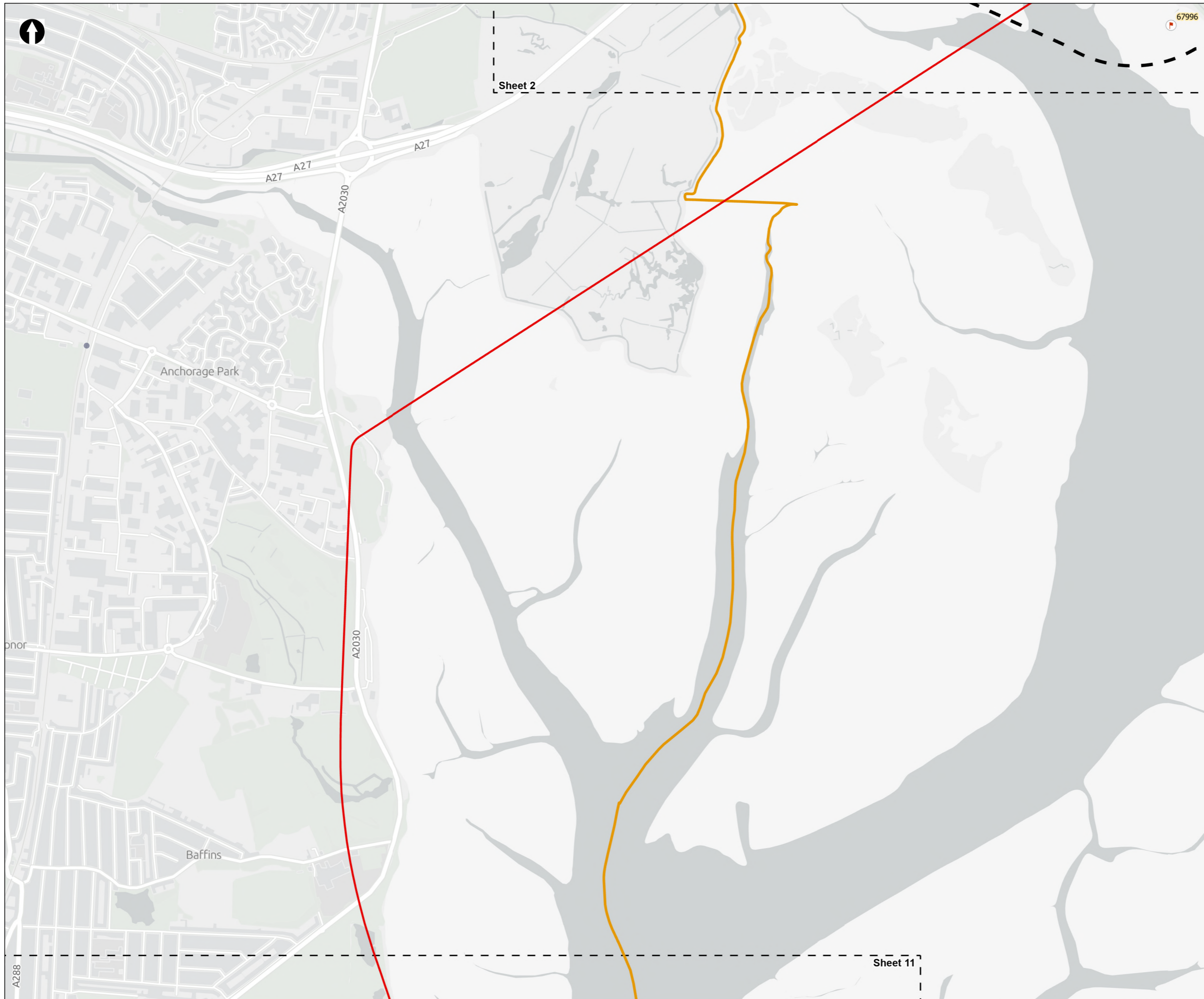
Figure 7.2
 Non-designated heritage assets within the study area
 Sheet 9 of 12

Drawn DL	GIS Checked MW	Checked MP	Approved AK
Scale at A3 1:15,000	Status Final	Revision 05	Security STD

Drawing Number
PC5223-RHD-ES-ZZ-D-Z-0116

© Southern Water 2026
 This document is issued for the party which commissioned it and for specific purposes connected with the captioned project only. It should not be relied upon by any other party or used for any other purpose. We accept no responsibility for the consequences of this document being relied upon by any other party, or being used for any other purpose, or containing any error or omission which is due to an error or omission in data supplied to us by other parties.





- Order Limits
- 500m Study Area
- Sheet Extent Boxes 1:15k
- Local planning authorities
- Hampshire HER**
- Archaeology

Example ID Labels:
 *7031 - Historic Buildings
 *39183 - Archaeology
 *EWC5042 - Events
 *MWC5042 - Monument Find Spots

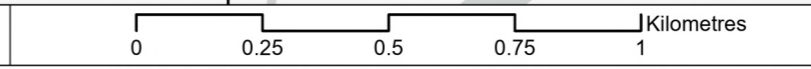
Coordinate system: British National Grid; Datum: OSGB 1936
 Data sources: © Crown copyright and database rights 2026 Ordnance Survey 0100031673. Sources: Esri, TomTom, Garmin, FAO, NOAA, USGS, © OpenStreetMap contributors, and the GIS User Community, Contains OS data © Crown Copyright and database right 2026. Contains data from OS Zoomstack

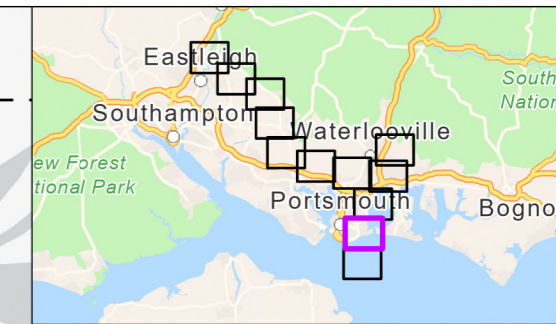
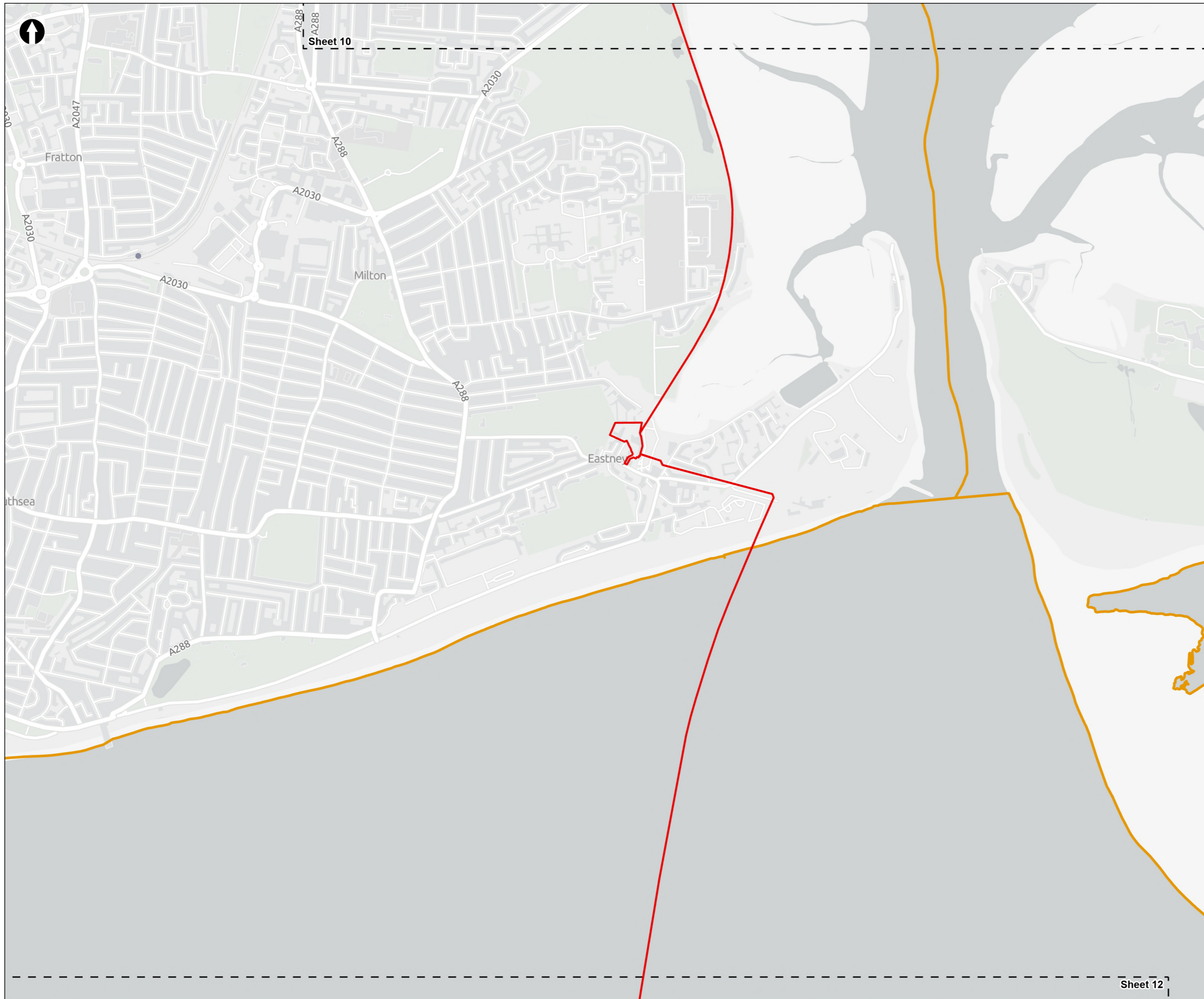
PROJECT TITLE
 Hampshire Water Transfer and Water Recycling Project



Figure 7.2
 Non-designated heritage assets within the study area
 Sheet 10 of 12

Drawn DL	GIS Checked MW	Checked MP	Approved AK
Scale at A3 1:15,000	Status Final	Revision 05	Security STD





- Order Limits
- Sheet Extent Boxes 1:15k
- Local planning authorities

- Example ID Labels:
- *7031 - Historic Buildings
 - *39183 - Archaeology
 - *EWC5042 - Events
 - *MWC5042 - Monument Find Spots

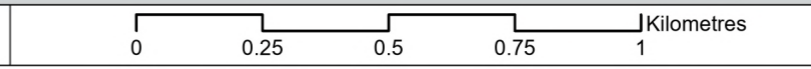
Coordinate system: British National Grid; Datum: OSGB 1936
 Data sources: © Crown copyright and database rights 2026 Ordnance Survey 0100031673. Sources: Esri, TomTom, Garmin, FAO, NOAA, USGS, © OpenStreetMap contributors, and the GIS User Community, Contains OS data © Crown Copyright and database right 2026. Contains data from OS Zoomstack

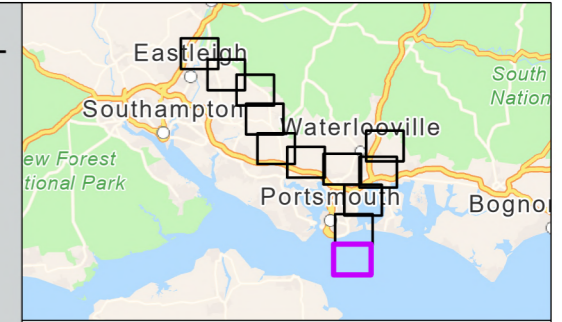
PROJECT TITLE
 Hampshire Water Transfer and Water Recycling Project





Figure 7.2
 Non-designated heritage assets within the study area
 Sheet 11 of 12

Drawn DL	GIS Checked MW	Checked MP	Approved AK
Scale at A3 1:15,000	Status Final	Revision 05	Security STD





 Order Limits
 Sheet Extent Boxes 1:15k

Example ID Labels:
 *7031 - Historic Buildings
 *39183 - Archaeology
 *EWC5042 - Events
 *MWC5042 - Monument Find Spots

Coordinate system: British National Grid; Datum: OSGB 1936
 Data sources: © Crown copyright and database rights 2026 Ordnance Survey 0100031673. Sources: Esri, TomTom, Garmin, FAO, NOAA, USGS, © OpenStreetMap contributors, and the GIS User Community, Contains OS data © Crown Copyright and database right 2026. Contains data from OS Zoomstack

PROJECT TITLE
 Hampshire Water Transfer and Water Recycling Project



Figure 7.2
 Non-designated heritage assets within the study area
 Sheet 12 of 12

Drawn DL	GIS Checked MW	Checked MP	Approved AK
Scale at A3 1:15,000	Status Final	Revision 05	Security STD

Drawing Number
PC5223-RHD-ES-ZZ-D-Z-0116

